

# How to install a pond liner

Installing a pond liner allows your WoodBlocX structure to safely hold water. It must be installed before adding your finishing capping layer.

You can choose to include a pond liner with your order.

**We sell a heavy-duty 4 x 4m (16m<sup>2</sup>) PVC pond liner which is suitable for ponds up to 1.875 x 1.875m x 0.65m. Our liner is available in one-size only and must be cut to size.**

We offer bespoke quotes for box welded pond liners however these are considerably more expensive versus our flat PVC sheet liner option.

We do not sell fish, aquatic plants, pond pumps, filter systems or overflow equipment.

[Contact us](#) if you have any questions or require support.

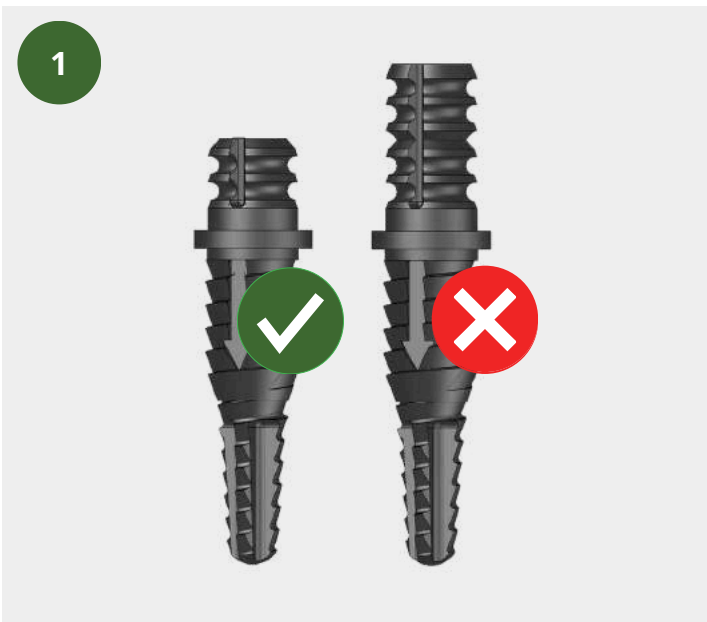


**Step-by-step guide shown on the following pages**



**WOOD  
BlocX**

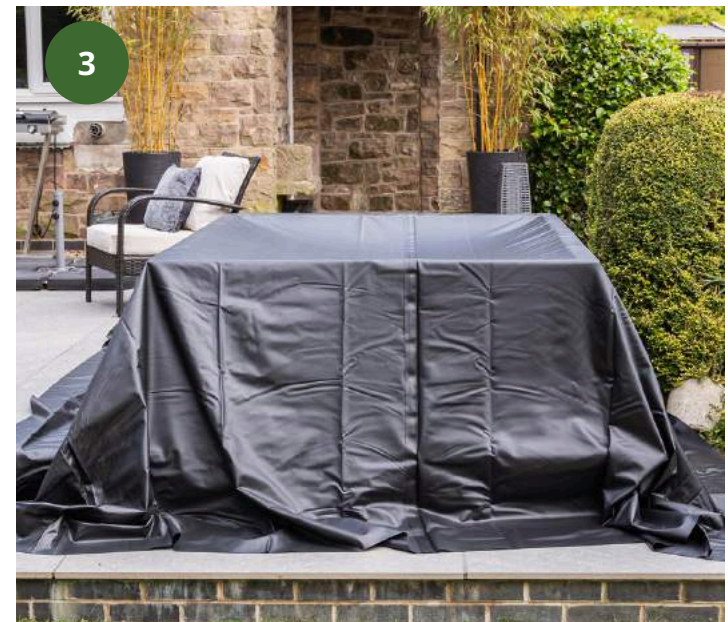
Start a [Live Chat](#) | [woodblocx.co.uk](http://woodblocx.co.uk)



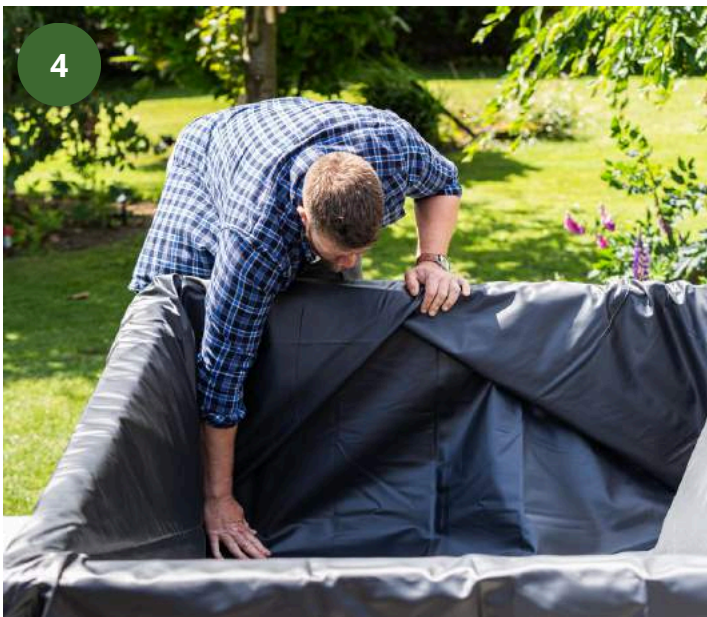
**Pre-cut final layer dowels** - before adding liner or the finishing capping layer, get your dowels ready!



**Add ground protection** - use pond underlay, old carpet or geotextile fabric to prevent unwanted punctures.



**Unwrap the liner** - unfold & cover the entire structure. You can choose to use the 'matt' or 'shiny' side of the liner.



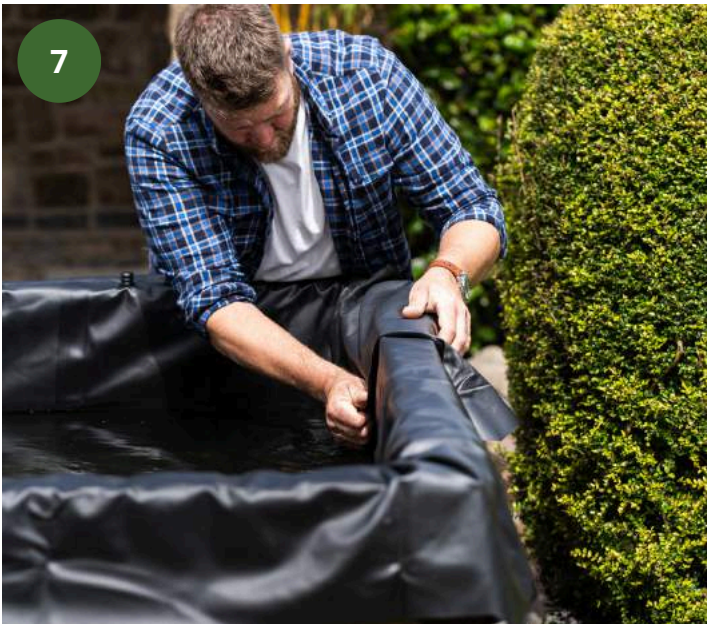
**Tuck the liner into the corners** - carefully move the liner into the corners of the structure (avoid tension).



**Start filling with water** - let the liner find its natural position within the structure as it fills with water.

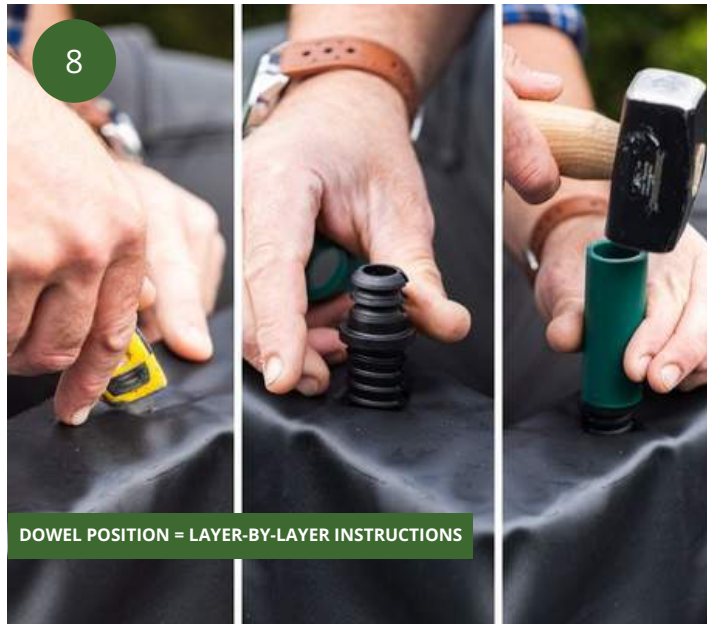


**Trim away some excess** - to make adjustments easier, carefully trim away some overhanging liner (leave plenty).



7

**Smooth out creases & folds** - as the pond fills with water, adjust the liner's position to reduce bunching.



8

DOWEL POSITION = LAYER-BY-LAYER INSTRUCTIONS

**Trap your liner with dowels** - make small incisions and hammer through your final layer dowels to secure the liner.



9

PAGE 12 - GENERAL BUILDING INSTRUCTIONS

**Install your angle corner plates** - use your dowel protector to hammer these plates firmly into place.



10

**Knock on your capping layer** - use a spare BlocX to protect the wood when hammering...*force may be needed!*



11

**Trim excess liner under capping** - using a sharp blade carefully cut away remaining liner (pull slightly as you trim).



12

**As the water reaches the top** - use a spare BlocX to hammer down the capping layer again. **JOB DONE!**

# Common questions

## **What side of the liner should I use?**

Our PVC pond liner has two sides: a dull/matt side and a shiny side. Both sides perform as expected - it does not matter what side faces up or down when being installed. This choice is yours!

## **Can I use sand as a protective layer under the liner?**

Yes, but it's advised to also add a layer of further protection of underlay or carpet on top of the sand due to some sand containing sharp fragments...you are better extra safe than having a leaky pond!

## **Do I need to add a protective layer under the liner on soft ground?**

Yes, to avoid any unwanted tears overtime, we advise to add extra protection under the liner on both hard and soft ground types.

## **What is the best way to reduce liner bunching?**

As the pond fills with water and the liner finds its natural position, carefully pull excess liner over the top and fold where necessary.

## **Why is my WoodBlocX timber green/damp?**

WoodBlocX timber may be damp with a green patina when building - this is completely normal and is due to our wood treatment process. The colour will transform and the wood will dry out within a couple of weeks after being exposed to sunlight and fresh air!



**WOOD  
BlocX**  
Start a [Live Chat](#) | [woodblocx.co.uk](http://woodblocx.co.uk)